



Annual Activity Report 2014



The Domari Society
of Gypsies in Jerusalem

General information

Location of the Domari Society:

Jerusalem

Name and address of the premises where the services are carried out

The Domari Society:

Domari Community Centre
Shuafat Road 10, Jerusalem
Phone: +972-(0)2-532-4510

Person in charge of the Domari Community Center:

Amoun Sleem, Director
Domari Society of Gypsies in Jerusalem
P.O. 51488 Jerusalem (Al Quds)
+972 (0)54 2066210
domarisociety@gmail.com
www.domarisociety.com



Contents



The Domari Society
of Gypsies in Jerusalem



3	Letter from the director	12	Publications and Media
4	Brief description of the organization	13	Assisting during conflict and fragile social and political situations
5	Range of focus in 2014	13	Working with donors
5	Cooperation/Membership	14	The Domari Team 2014
6	The Domari Society and its projects in 2014	16	Board of Governors
7	Catering Course	17	Financial information 2014
8	Educational Program		
10	Jewelry Course		
11	Sewing Course		
12	Exhibitions and Bazaars		

Letter from the director of the Domari Community Center



The past year has been an active one for our organization. I hope that you will review the photos and information we have offered in this annual report.

In addition to serving the needs of our community, our board was busy in 2014 with efforts to strengthen our organization. These efforts include:

- Revision of mission and goals
- Review of financial reporting
- Implementation of a conflict of interest policy
- Addition of two new board members

- Development of an organizational plan

As you can see, we believe in operating our organization as effectively and efficiently as possible. Our organization provides services to many of the Domari Community. We could not do that without the commitment of our volunteers. And we could not operate without financial support. 2014 was a lucky year; we were able to gain new donors like the US-Middle East Partnership Initiative and the Australian Representative Office.

To those of you who are not involved, I ask that you consider volunteering, and/or contributing financially to our organization.

I would like to say thank you on behalf of the whole community for all the contributions and support we have received in 2014. We greatly appreciate the dedication and support of our benefactors as we seek to counteract the poor living conditions and discrimination faced by the Domari people.

Amoun Sleem,
Director of the Domari Community Center

Brief description of the organization

The Gypsies who settled in Israel and Jordan are known as the Dom and have maintained a uniquely faceted culture that distinguishes them from their Israeli and Palestinian neighbors. Between the third and tenth centuries C.E., waves of Dom people migrated from India to settle in the Middle East and parts of Europe to escape famine and other hardships in their homeland. The Dom community in Jerusalem forms a unique group within the mosaic of ethnic and cultural groups in Jerusalem. Nowadays, the Dom in Jerusalem – a population of 1,500 individuals, living mostly around the Lions Gate in the Old City and in refugee camps in East Jerusalem – have been residents of this city for more than four centuries. Lost within the Palestinian-Israeli conflict, the community represents one of Jerusalem's most marginalized, underprivileged and vulnerable populations. They face many serious challenges in their quest for equal rights. Characterized by isolation, low income levels and substandard education, the Dom are at the bottom of the socio-economic scale. Children often drop out of school early because of the frequent harassment they face, but also because of the overbearing necessity to provide financially for their families. Inevitably, the young people of this community face a future where opportunity is sparse. In addition, women

in the Dom community have limited opportunities to receive the necessary training to supplement their families' income. This reality has a profoundly negative impact on the psyche and morale of the society.

A report published by the American Jewish Joint Distribution Committee (JDC) in October 2004, entitled "Gypsies in Jerusalem: A Population at Risk", illustrates the dire nature of the situation. As the report highlights, almost 80% of the 1500 Gypsies in Jerusalem have no source of steady income (66% have absolutely no work at all) and depend on monetary support from unemployment or other welfare payments. Less than half the males and slightly above a third of the females has an education above elementary school (that is, above sixth grade). The aforementioned facts about the Dom explain the circumstances of the disenfranchisement and reveal the reasons why the Dom are considered the lowest social class in Palestinian society. It has become a very apparent need in the city of Jerusalem.

Because of the discrimination that the Dom community faces, many of them, ashamed by their true identity, designate themselves as Arabs. As a result, the Gypsy community which consists of mainly Muslims, has largely assimilated with the Arab community, which led to a loss of their Dom culture. This is manifested in the greatest extent by the loss of the Domari language, which is now spoken only by the elderly.

The Domari Society of Gypsies in Jerusalem was founded in the year 2000 by Amoun Sleem. Ms. Sleem, a Dom herself, experienced first-hand the severe discrimination, cultural marginalization, poverty and adult illiteracy among the society. Her familiarity with the needs of this group of people was the impetus for her dream of founding the Domari Society. She started the organization out of her own home where it functioned for its first five years of existence. In 2005, the community center, located in Shu'fat of East Jerusalem, was opened, and it is here that the organization still resides. The center is a warm and welcoming place and offers the members of the Dom community a secure space to gather and receive practical support and educational resources. The center provides after-school tutoring, job skills training, literacy courses, humanitarian aid, and programs that foster cultural pride.

For further information you can have a look at our homepage: www.domarisociety.com

Range of Focus in 2014

Our work focused on the advancement of three main aspects:

- Education for Dom children
- Initiatives for empowerment of Dom women
- Awareness campaigns for the Dom Society

In order to impact these areas of focus we offered a range of different activities that will be highlighted in this report.

Cooperation/Membership

We consider cooperation as a necessary tool for development processes. Therefore, we maintain partnerships with different stakeholders, being aware of the importance of each pillar: local communities, authorities, other organizations and individuals at a national and international level.

Cooperation/Membership

International

- The Global Fund for Women
- The Australian Representative Office
- The US-Middle East Partnership Initiative (MEPI)
- Yolka Finland
- Global Aid Network
- Kinderpostzegels
- Friends of Domari from the Netherlands

Regional

- The Dom Research Center

The Domari Center and its projects in 2014



Catering Course

Project duration: November 2014 to February 2015

Donors: Global Fund of Women

Approved funds:

Goals

- *To increase the possibilities of Dom women to find an employment or create own business structures*
- *To improve the status of Dom women within their families and their society*

Objectives

- *To provide the necessary resources and tools for the Dom women to practice and improve their cooking abilities*
- *To teach the basic strategies and methods of cooking and preparing large quantities of food*
- *To assist the Dom women in the networking process and establishing connections for future catering opportunities in the local area*
- *To expose the Dom women to the foundations of the catering business and train them on personal business development qualities*

Implemented activities

The center offered a catering course for three months from November 2013 to February 2014. Two sessions were

provided each week, typically lasting two to three hours.

In total, eight Dom women of all ages attended the program regularly. We provided bus transportation assistance for those involved. At the end of each course, the women would enjoy a lunch including the food they had prepared that day.

Most of the woman involved in the sessions already have many cooking skills. The catering course focuses on exposing the women to foods that they have not had experience making previously. This passed course concentrated on the creation of pastries as a main dish, which was a new concept to the participants. Throughout the course the women learned how to make different kinds of pastries and how to organize and arrange them in a beautiful way. They also learned how to organize and coordinate cooking for a high quantity of people and were able to experience the business of catering to large groups.

The course was taught by *Azzam Sulha*, who is a chef at the National Hotel in Jerusalem and who teaches culinary classes at a local school.

Achievements

As we had hoped, the course was completely full with eight active participants weekly. The women were extremely enthusiastic and gave their full attention to the classes. Their expectations were exceeded and they were very impressed by the range of

international pastries included in the course.

The course has improved the self-confidence of the participants.

Additionally, the concept of the women in the home using skills to provide for her family has enabled those around her to have an open mind regarding the woman's role and abilities in society.

As the women gain skills and find employment through the skills developed in the course, both the economy of the community and of the Dom society as a whole will experience positive effects.

The Dom women are hoping to further their learnings in the area of cooking and catering, should this chance be available. They have greatly enjoyed the opportunity and it will hopefully have a lasting effect on them personally and on their involvement in the community.

Educational Program

Project duration: January 2014 to December 2014

Donors: MEPI, Kinderpostzegels

Approved funds: 13,050 \$

Goal

- *The overarching goal of the educational program for Dom children is to raise the educational attainment level.*

Objectives

- *To improve students' results*
Within our project we try to improve our students' results by offering assistance with homework and projects. There are additional tutoring sessions offered that are intended to focus on particular weak points.
- *To increase the involvement of the families in the education process*
We hope to invest not only in the children involved in the education program, but also their families. The family can have a significant impact on the child's desire to continue learning. The involvement of the parents facilitates the cooperation between the center, the school and the families and allows us to do the best possible for the children's progress.
- *To raise the self-confidence of cultural identity*
The younger Dom generation has become less interested in the ancient traditions and culture of the Domari people, preferring rather to assimilate into the neighboring Arab communities. This self-imposed assimilation can be attributed to the discrimination and marginalization that the Dom people face. As a result, there are economic and social limitations that come from being identified and recognized as Dom. These limitations are both internally and externally imposed. We believe educating the younger generations will start to break down these limiting barriers.

Implemented activities

The center provided three lessons every week on Mondays, Wednesdays and Saturdays, in Arabic, English and Mathematics. Usually the sessions took two and a half to three hours in the afternoon. In total, fifteen students, ages seven to sixteen participated in the program. The tutoring program addressed twelve girls and three boys. We try to focus predominantly on the development of girls because they are treated unequally and are disadvantaged within the Domari community. We provided meals to both students and teachers, and covered the bus transportation fees. In addition, we provided the students with necessary school supplies at the beginning of the school year.

In 2014 *Majed Abu Sneini*, who is a teacher at the local "Brahmie College" in Shu'fat, taught the Dom children. He is educationally and didactically trained. We are familiar with the educational system in East Jerusalem and every time we acquire additional teachers from surrounding schools, we ensure that they are well-trained and equipped for our purposes. The teachers are obligated to attend extra training each year to learn new methods and get to know new educational material. This includes both the training required for Mr. Sneini and any other teaching resources that join our community this year.

Achievements

Batool and Doha who are part of the educational program since years received a 90% level from their schools in English this year, revealing the success of the tutoring program.

Amir is one of those students who has difficulty in school. Within 2014 he wanted to drop out of education and quit school. Long discussions and dialogues with him and his parents were needed to convince and encourage him of continuing school and the tutoring program. The new teacher, luckily, has a very good relationship with Amir and pays special attention to him during the lessons. Amir seems to be more motivated than before, but we always have to support him in a caring and helpful way. We were able to improve the results for most of the students attending our program.

It is important to involve the parents in the process of the educational program. Therefore, we work on building a stronger community of Dom children and parents who help and support each other. For this to happen we had to actively contribute towards creating closer ties with the families. Various methods for reaching out to the families included providing them with medicine, food supplies and clothing donations. When families came to the center we took the opportunity to invite them in for a discussion and began to foster relationships. Thereby we provided the opportunity to inform the families in detail on the educational program and

provided answers to their questions. We also made a strong effort to stay closely connected with all families who are currently connected with the Domari Society and carefully updated them as well as on their child's progress. In this way we tried to make use of the word-to-mouth propaganda which is a powerful tool in the Dom community and will enable us to extend our network.

The Domari center tries to awaken the children's interest in education opportunities as a way out of poverty. It is a thin line between integrating in one culture and at the same time keeping one's own culture. The Domari Society supports the children by overcoming their uncertainty and answering their questions. All in all it is difficult to measure the degree of discrimination and even more so it is a challenge to change the attitude of those who actively discriminate. In the end it matters how the children deal with the daily situation. Domari Centre's focus is on assisting and supporting the children whom we encounter.

Jewelry Course

Project duration: April 2014 to May 2014

Donors: Grassroots Al-Quds Network

Approved funds:

Goals

- *To increase the possibilities of Dom women to find an employment or create own business structures*

- *To improve the status of Dom women within their families and their society*

Objectives

- *To provide a safe environment for creativity and the development of practical skills*
- *To offer the resources necessary for Dom women to practice and improve their sewing skills*
- *To create a productive location for Dom women to successfully create marketable goods for profit*
- *To assist Dom women in networking processes by connecting them with sales opportunities at local markets, annual bazaars, exhibitions and our in-center store*

Implemented activities

The center offered a two-month intensive Jewelry course in cooperation with Sunbula. Sunbula is a non-profit organization based in Jerusalem which supports Palestinian women's cooperatives by providing marketing and sales opportunities as well as assisting in the development of their skills.

The course took place during March and April in 2014. The seven participating Dom women met once a week for a couple of hours in the center. Sunbula provided the center with a professional jewelry designer who exposed the Dom women to new ideas and concepts in jewelry production. They were taught a special design for earrings, necklaces and

bracelets made from colorful fabrics. Everything which was produced or manufactured by the Dom women is available at our small shop in Shu'fat. The revenue from all sales is reinvested into the well-being of the Dom community.

Our center provided the women transportation to each event and snacks during the course. In addition, all necessary tools and objects for jewelry production were supplied by our center.

Achievements

The women attending the course followed the lessons with ample attention. Most of them expressed a very positive opinion on the project. They consider the production of jewelry useful and favorable because they can easily continue the same work from their homes. If possible we try to offer them a joint cooperation with the center which means that whenever there is a need of new jewelry to sell we hire several of the women for a short period. The new design taught by Sunbula was extremely popular and was sold out after a short time. Thus, we hired women to reproduce this jewelry and were sold out again during Christmas time as we attended several bazars.

Some of the women who participated in this course bought the required materials and started home production. They try to work autonomously and sell their products to private persons or to local shops.

Sewing Course

Project duration: October 2014 to March 2015

Donors: MEPI

Approved funds: 10,020 \$

Goals

- *To increase the possibilities of Dom women to find an employment or create own business structures*
- *To improve the status of Dom women within their families and their society*

Objectives

- *To offer the resources necessary for Dom women to practice and improve their sewing skills*
- *To provide instruction and tools to enable skill development*
- *To create a productive location for Dom women to successfully create marketable goods for profit*
- *To assist Dom women in networking processes by connecting them with sales opportunities at local markets, annual bazaars, exhibitions and our in-center store*

Implemented activities

For the sewing endeavor we hired *Imm Ramzi*, who is professionally and didactically trained to teach the women about sewing and embroidery. She is a designer and lived and worked for several years in the US before she came back and

established her business in East Jerusalem. She has a good relationship to the ten women participating in the course. The Sewing Course takes place once a week on Saturdays for three hours. The women come in the early morning at nine o'clock and stay until noon. We provide them with coffee, tea and snacks.

During the first three months the women were educated in basic techniques of sewing and embroidering handicrafts in the traditional Domari style. Now, the women have already learned how to sketch and draft ideas for many clothing styles and how to implement correct proportions and measurements. Upon the new year, they will start learning about different embroidery techniques.

Achievements

These activities have strengthened the women by equipping them with new skills and helping them to gain self-confidence. A final assessment of the achievements compared to our overarching goals cannot be made by now, because the courses just reached the halfway point. What we can say is that the women attending the course regularly follow the lessons with a high level of interest, participation and attention. They have begun to develop future plans and perspectives. We will do our best to support them with their ideas of creating their own business structures. Additionally, we are keeping our eyes and ears open for possible employment opportunities in the local community.

Exhibitions

During the Christmas season, we were invited to several Bazaars to sell our handmade goods, all produced by the women participating in our courses. This year we participated in three different exhibitions. It was a great opportunity to spread our name throughout the community and raise awareness of the needs of the Domari Society. Additionally, we are working on generating a catalogue which will show all the products women of the Domari Society have created. This way we hope to gain more attention because our Center's location is not easily recognized at this time.

In November we created an exhibition showing old and ancient portraits of the Domari Society in Jerusalem. We will hopefully be able to perform this exhibition during spring in 2015.

In addition, we plan to continue publishing a newsletter providing the latest information on what is happening in and around the Domari center. The next newsletter will hopefully be published at the end of March. Everyone who is interested to subscribe to our newsletter can send us an email with the subject line "Subscription of Newsletter".

Publications and media

We are happy to announce the release of Amoun's first book, "A Gypsy Dreaming in Jerusalem". The book is about Amoun's experience living as a Jerusalem Dom from the onset of her childhood and

through her adult life. It is also the remarkable story of a misunderstood people whose language, culture, and history deserve to survive, and the woman who refused to let it die. Amoun's book is available at the Domari Center and online at amazon.com.



Assisting during conflict and fragile social and political situations

During and after the war in Gaza the political situation in Jerusalem tremendously changed for the worse. The security precautions, which were enforced by the Israelis, had unforeseen consequences for the Domari population. Most of the Dom live in and around the Old City, some also live in refugee camps in East Jerusalem. During and after the Gaza war the number of attacks increased which is why the security presence increased as well. Consequently

checkpoints in East Jerusalem, and even parts of the Old City, were shut down unexpectedly, the number of violent clashes involving tear gas and rubber bullets increased as well. As a result the women and children could not show up regularly because of these incidents. Some participants coming to our center suffered from the effects of tear gas inhalation. These are only the physical impacts. It is impossible to explain the mental and emotional impact such a conflict has especially had on children and others from the Dom community.

Working with donors and partners

Our organization benefits greatly from the support of individual givers, partners and other foundations or organizations who give of their time, expertise and funding to ensure that we continue our work among the Domari community. Without the help of our committed donors and partners, we could not reach as many Dom people as we do. We are thankful for all our donors and partners and hope to continue our relations in 2015. A relationship between donor and beneficiary must involve consistent communication and transparency. The Domari House commits to working with all of our donors in a trustworthy atmosphere. We believe that the values of integrity, intentionality and honesty are the best ways of developing a vision and working on the vision together.

The Domari Team

Amoun Sleem

Yara Aweidah



Yara is an accountant who works in the Mercantile Bank in Jerusalem. Since October she comes once or twice a week to the center in order to do necessary accounting and administrative tasks.

Sarah Langsam (Picture missing)

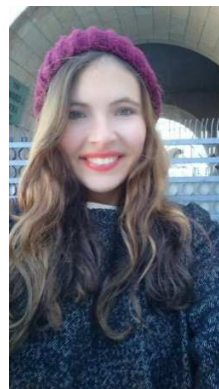
After finishing school in Germany, Sarah volunteered in the Domari Community for one year from August 2013 to August 2014. She supported the Domari Community five times a week and helped around the center as well as in the office.

Stefanie Sommer



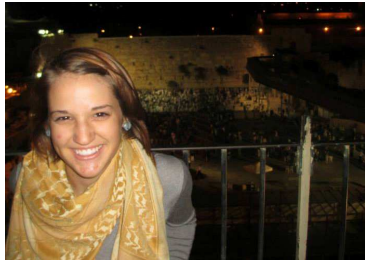
Stefanie volunteered in the Domari Community during September 2014 and decided to come back for a six-month internship from November 2014 till April 2015 to strengthen her studies in Arabic. She works five days a week in the office and around the center.

Elena Colmsee



Elena finished school in Germany and spends a year in Israel to volunteer in the Willy-Brandt-Center in Jerusalem. Once a week she comes to the Domari Community to assist with any needs. She arrived in September 2014 and will stay until August 2015.

Sarah Mohler



Sarah supported the Domari Community from October 2014 to December 2014 while studying abroad for three months at Jerusalem University College. She came once a week to the center and assisted with any needs.

Camille



Camille helped around the center for three months from October 2014 to December 2014. He did an internship at the Holyland Handicraft Cooperative Society as an extension of his Fairtrade studies. He supported the Domari Community once a week to deepen his experience of handicraft in Jerusalem.

Board of Governors

Braunstein, Art:

Department Manger in Yad Vashem

artb@netmedia.net.il

Harari, Michaela:

School teacher

pasos@netvision.net.il

054-4867862

Kabiri, Omri :

Lawyer

okabiri@knklaw.com

02-5667711

Natsheh, Jamal:

Real estate agent

jamalnatsheh@yahoo.com

Nimer, Khamis:

Chef

Shehadeh, Rima:

Head of NGO Lion hart in Jerusalem

rimashehadeh@hotmail.com]

Strauss, Dafnah (PhD): (Head of the Board)

Professor University Tel Aviv

dafnahs@hotmail.com

02-6203396

Tams, Francis:

Accountant

tamsfrancis@yahoo.com

054-6572359

Williams, Allen (PhD):

Pastor of the Baptist Church in US

drc@domresearchcenter.com

Financial information 2014

Description	<i>Balance Sheet</i>				
	<i>As End Year 2011-2014</i>				
	Amount	2014	2013	2012	2011
	FC - \$ /EU	NIS	NIS	NIS	NIS
Assets					
1-Current Assets					
1-1 Cash & Bank					
Cash on Hand			₪ 126	₪ 574	
MD Bank Current NIS					
MD Bank Deposit NIS					
MD Bank Current USD \$	\$68,040	₪ 263,241	₪ 39,209	₪ 60,028	₪ 9,318
MD Bank Current EU	€ 847	₪ 5,124	₪ 389	₪ 776	₪ 34,892
MD Bank Deposit EU		₪ 0	₪ 14,346	₪ 19,931	
Total Cash & bank (1-1)		₪ 268,366	₪ 54,070	₪ 81,309	₪ 44,210
1-2 Account Receivable					
National Insurance					
Prepaid Expenses		₪ 5,000		₪ 3,500	₪ 3,500
Amoutah Registrar					
Sub total Receivable (1-2)		₪ 5,000	₪ 0	₪ 3,500	₪ 3,500
1-3 Fixed Assets					
Equipment & Furniture Beginning		₪ 48,545	₪ 48,545	₪ 45,795	₪ 45,795
Added new assets		₪ 10,900		₪ 2,750	₪ 0
Less Accumulated Depreciation		₪ -35,465	₪ -29,969	₪ -24,741	₪ -19,925
Total Fixed assets (1-3)		₪ 23,980	₪ 18,576	₪ 23,804	₪ 25,870
Grand Total Assets (1)		₪ 297,346	₪ 72,646	₪ 108,613	₪ 73,580
2- Net Fund & Liabilities					
2-1 Liabilities					
Petty Cash					
MD Bank Current NIS (over drfat)		₪ 5,052	₪ 11,706	₪ 4,953	₪ 4,202
Post Date Checks		₪ 20,696	₪ 27,261	₪ 8,173	₪ 9,367
Income Tax & National Insu				₪ 2,813	₪ 1,775
Employee		₪ -0		₪ 3,409	₪ 4,691
Severance fund		₪ 32,536	₪ 33,482	₪ 33,481	₪ 33,354
Accrued tax services					
Other accrued expenses(elect.&water)		₪ 1,385	₪ 681	₪ 792	₪ 1,366
Total Liabilities (1-2)		₪ 59,669	₪ 73,130	₪ 53,621	₪ 54,754
2-2 Net Fund					
Temporary restricted net assets		₪ 216,019		₪ 31,188	₪ 0
Unrestricted net assets for fixed assets		₪ 23,980	₪ 18,576	₪ 23,804	₪ 25,871
Unrestricted net assets for activity		₪ -19,060	₪ 0	₪ -7,045	₪ 32,024
Result of the year		₪ 16,738	₪ -19,060	₪ 7,045	₪ -39,068
Total Net Fund (2-2)		₪ 237,677	₪ -484	₪ 54,992	₪ 18,825
Grand Liabilities & Net Fund (2)		₪ 297,346	₪ 72,646	₪ 108,613	₪ 73,579

Summary Statement of Activities

all amount is in NIS

Description	2014	2013	2012	2011
Revenue & Income				
Donation and Contribution	₪ 437,987	₪ 143,408	₪ 221,170	₪ 143,965
Items Sales	₪ 1,810	₪ 9,773	₪ 11,070	₪ 3,845
Interest	₪ 0	₪ 0	₪ 0	₪ 0
Released from Restriction	₪ 0	₪ 31,188	₪ 0	₪ 0
Restricted for 2013	₪ -216,019	₪ 0	₪ -31,188	
Total Revenue (1)	₪ 223,778	₪ 184,369	₪ 201,052	₪ 147,810
2- Expenses				
Salaries and Fringe Benefits	₪ 86,804	₪ 79,636	₪ 78,547	₪ 80,111
Admin Exp.	₪ 74,127	₪ 69,312	₪ 55,457	₪ 60,620
Project Cost	₪ 31,855	₪ 43,205	₪ 48,031	₪ 45,200
Professional Fees	₪ 0	₪ 0	₪ 0	₪ 0
Financial Expenses	₪ 8,850	₪ 16,504	₪ 14,039	₪ 5,763
Total Expenses (2)	₪ 201,636	₪ 208,657	₪ 196,074	₪ 191,693
3-Capital Expenses	₪ 10,900	₪ 0	₪ 2,750	₪ 0
4- Total Expenditure 2+3	₪ 212,536	₪ 208,657	₪ 198,824	₪ 191,693
Change in net assets				
Total Expenses	₪ 201,636	₪ 208,657	₪ 196,074	₪ 191,693
Less the depreciation Expenses	₪ -5,496	₪ -5,228	₪ -4,817	₪ -4,816
Add the purchase of new assets	₪ 10,900	₪ 0	₪ 2,750	₪ 0
Total Change	₪ 207,040	₪ 203,429	₪ 194,008	₪ 186,878
Yearly Result	₪ 16,738	₪ -19,060	₪ 7,045	₪ -39,068

Statement of Activities

all amount is in NIS

Description	2014	2013	2012	2011
1-1 Revenue Received in 2014				
Donation and Contribution	₪ 437,987	₪ 143,408	₪ 221,170	₪ 143,965
Items Sales	₪ 1,810	₪ 9,773	₪ 11,070	₪ 3,845
Interest				
Total Revenue 2014	₪ 439,797	₪ 153,181	₪ 232,240	₪ 147,810
1- 2 Revenue Released from Restriction from previous year				
		₪ 31,188		
1- 3 Revenue Restricted for 2015				
	₪ -216,019		₪ -31,188	
Total Revenue (1)	₪ 223,778	₪ 184,369	₪ 201,052	₪ 147,810
2- Expenses				
Salaries and Fringe Benefits				
Salaries Cost	87750.31	79636.08	78418.62	80036.01
Provision for severance fund	(946)		128	75
SUB TOTAL Salaries and Fringe Benefits	₪ 86,804	₪ 79,636	₪ 78,547	₪ 80,111
Admin Exp.				
Office rent	₪ 50,800	₪ 51,245	₪ 42,000	₪ 42,000
Utilities (Electricity, Water & Gas)	₪ 4,921	₪ 3,696	₪ 3,613	₪ 4,032
Subscription Fees		₪ 1,291	₪ 1,556	₪ 1,517
Office and kitchen supplies	₪ 2,246			
Repair & maintenance			₪ 204	₪ 30
Loading and moving		₪ 3,100		
Stationary	₪ 95	₪ 775	₪ 310	₪ 118
Telephone and Fax	₪ 5,663	₪ 9,020	₪ 7,157	₪ 12,066
Other Tax	₪ 9,750			₪ 322
E-mail and Internet Subscription	₪ 600		₪ 480	₪ 521
Postage	₪ 52	₪ 185	₪ 138	₪ 14
SUB TOTAL Admin Exp.	₪ 74,127	₪ 69,312	₪ 55,457	₪ 60,620
Project Cost				
Food package delivered to needy family				
Food For Students	₪ 2,021	₪ 4,917	₪ 6,840	₪ 5,814
Students Transportation	₪ 23,728	₪ 17,245	₪ 20,444	₪ 15,538
Teachers fees cost	₪ 2,630	₪ 19,443	₪ 15,491	₪ 12,962

Statement of Activities

all amount is in NIS

Description	2014	2013	2012	2011
Volunteer Exp	₪ 200			
External Consultants			₪ 2,363	₪ 1,000
Printings materials				₪ 700
Facilitator				
Supplies for activities	₪ 1,960	₪ 1,600	₪ 2,893	₪ 8,552
Entrance fees				₪ 633
Legal Fees	₪ 1,316			
SUB TOTAL Project Costs	₪ 31,855	₪ 43,205	₪ 48,031	₪ 45,200
Professional Fees				
Audit and Tax services Fees				
Sub Total Professional Fees	₪ 0	₪ 0	₪ 0	₪ 0
Financial Expenses				
Bank Charges	₪ 5,798	₪ 4,398	₪ 4,187	₪ 3,249
Depreciation Expenses	₪ 5,496	₪ 5,228	₪ 4,817	₪ 4,816
Difference of Exchange rate	₪ -2,444	₪ 6,878	₪ 5,035	₪ -2,302
SUB TOTAL Financial Expenses	₪ 8,850	₪ 16,504	₪ 14,039	₪ 5,763
Total Expenses (2)	₪ 201,636	₪ 208,657	₪ 196,074	₪ 191,693
3-Capital Expenses				
Computer				
LCD			2750	
Tools for project				
Office Equipment	10900			
Total capital Expenses (3)	₪ 10,900	₪ 0	₪ 2,750	₪ 0
4- Total Expenditure 2+3	₪ 212,536	₪ 208,657	₪ 198,824	₪ 191,693

List of Income

Organization Name	FC \$/Euro	NIS
Donation Received in 2014		
Yolka Finland	€ 10,000	₪ 47,521
Stichting Kinderpostecels	€ 6,000	₪ 28,920
Stichting Global Aid network	€ 9,000	₪ 42,470
Dom Research	€ 14,400	₪ 50,958
American Consulate	\$10,856	₪ 38,246
Australian	€ 14,889	₪ 57,650
St.Vrienden Van Domari	€ 7,300	₪ 34,177
Global Fund For Women	€ 33,887	₪ 133,571
Friends Of Domari	€ 944	₪ 4,474
Total Donations & Contributions 2014		₪ 437,987
Other Income		
Item Sales		₪ 1,810
Total Received 2014		₪ 439,797